

1. Q: How do I install "XP mode" on Win7 with AM3R2 CPU?

A: Please install the Microsoft hotfix kb2519949 first; otherwise XP Mode may not be installed successfully.

Please kindly refer to a link below to download this hotfix.

<http://support.microsoft.com/kb/2519949>

2. Q: How do I install Ubuntu 11.10 on Vision 3D Series (Sandy Bridge)?

A: Please follow below steps:

Step 1. Add " nomodeset" parameter before installing. (a space, then nomodeset)



Step 2. When you boot for the first time from HDD after installation, please press shift when booting up until the GRUB menu shows up.

Step 3. Press "e" to edit the option. Replace "quiet splash" with "nomodeset".

```
setparams 'Ubuntu, with Linux 3.0.0-12-generic'

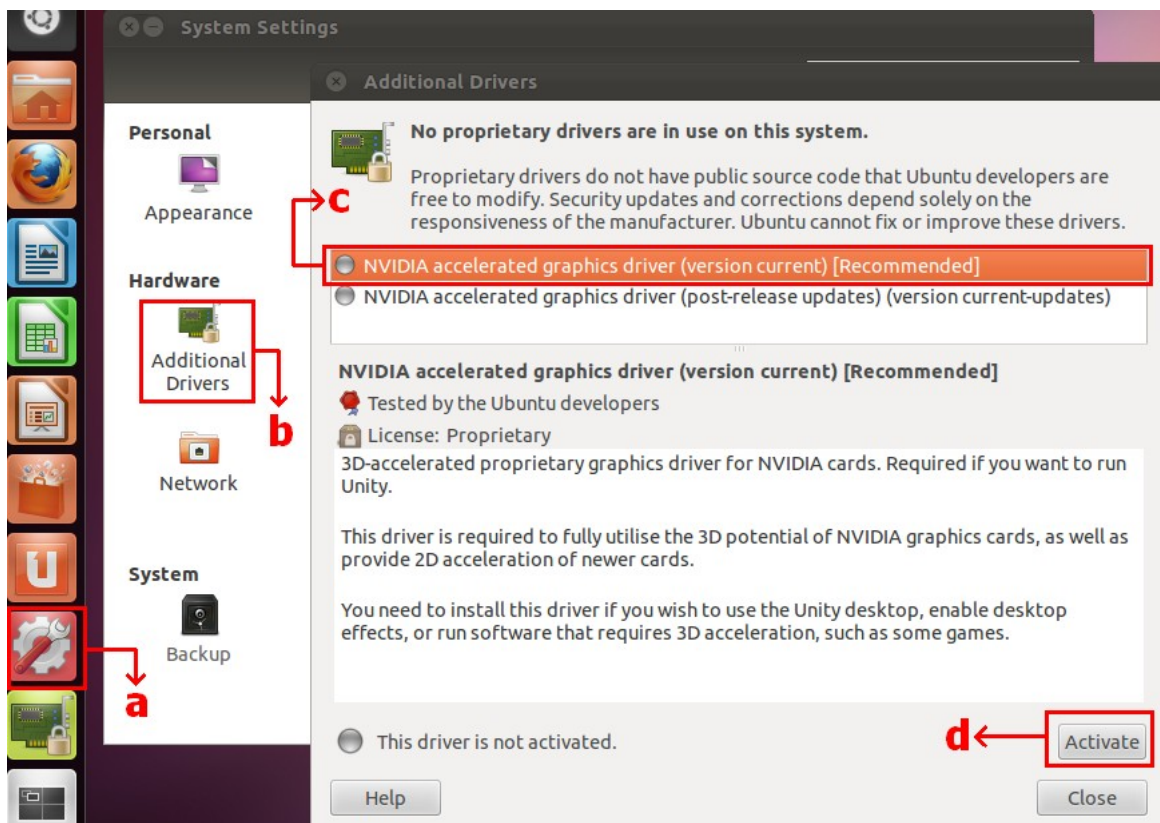
recordfail
set gfxpayload=$linux_gfx_mode
insmod gzio
insmod part_msdos
insmod ext2
set root='(hd0,msdos5)'
search --no-floppy --fs-uuid --set=root 76870d2d-bb1e-4de7-9710-f889\
31829787
linux /boot/vmlinuz-3.0.0-12-generic root=UUID=76870d2d-bb1e-4de7-97\
10-f88931829787 ro quiet splash vt.handoff=7
initrd /boot/initrd.img-3.0.0-12-generic
```

Replace with "nomodeset"

Step 4. Press Ctrl+X to continue booting process.

Step 5. Connect to Internet and start updating drivers for the graphic card.

[System Settings] > [Hardware] > [Additional Drivers] > Activate [NVIDIA accelerated graphics driver]



3. Q: How do I set ASRock XFast LAN works with Teaming function?

A: Please follow the setup steps as below:

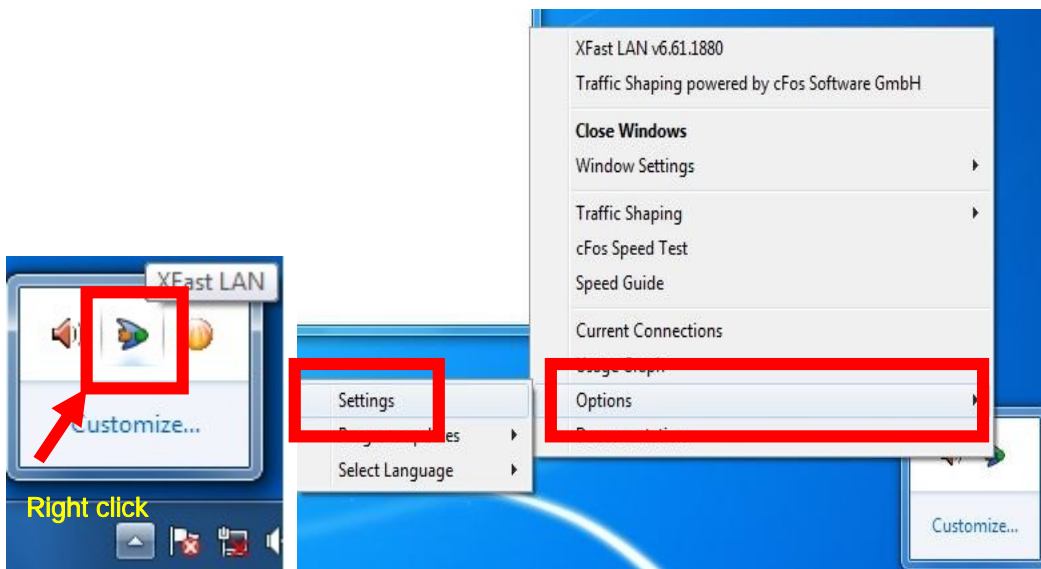
Step 1. Please remove all LAN cable from your system.

Step 2. After finish the procedure of OS installation, please insert the support CD and install all system drivers and XFast LAN

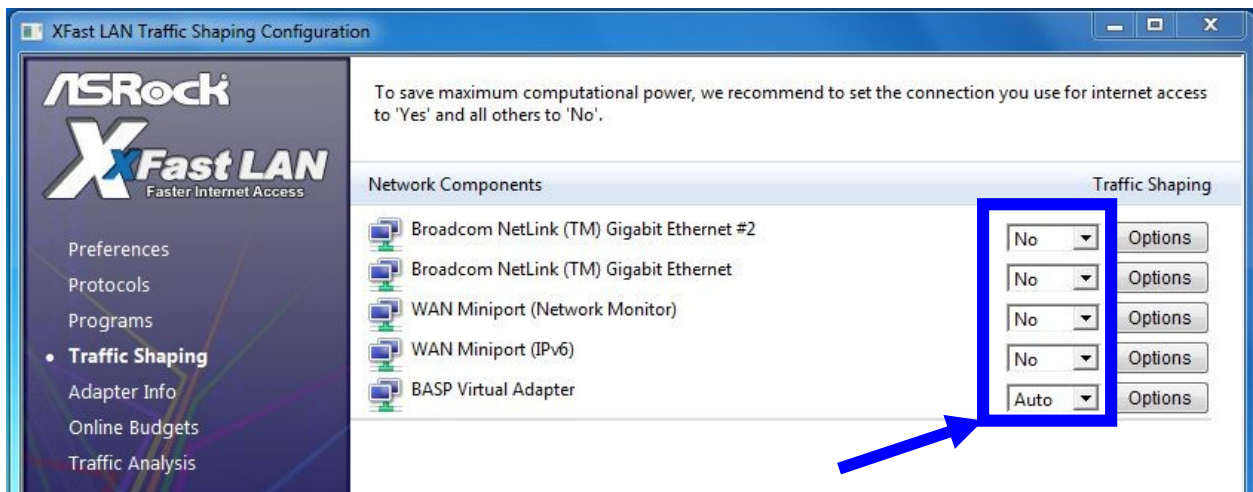
Step 3. Please download the teaming driver from following link and install it.

Broadcom teaming driver download link: [32-bit OS](#) [64-bit OS](#)

Step 4. Under OS, right click XFast LAN icon and select options → Settings



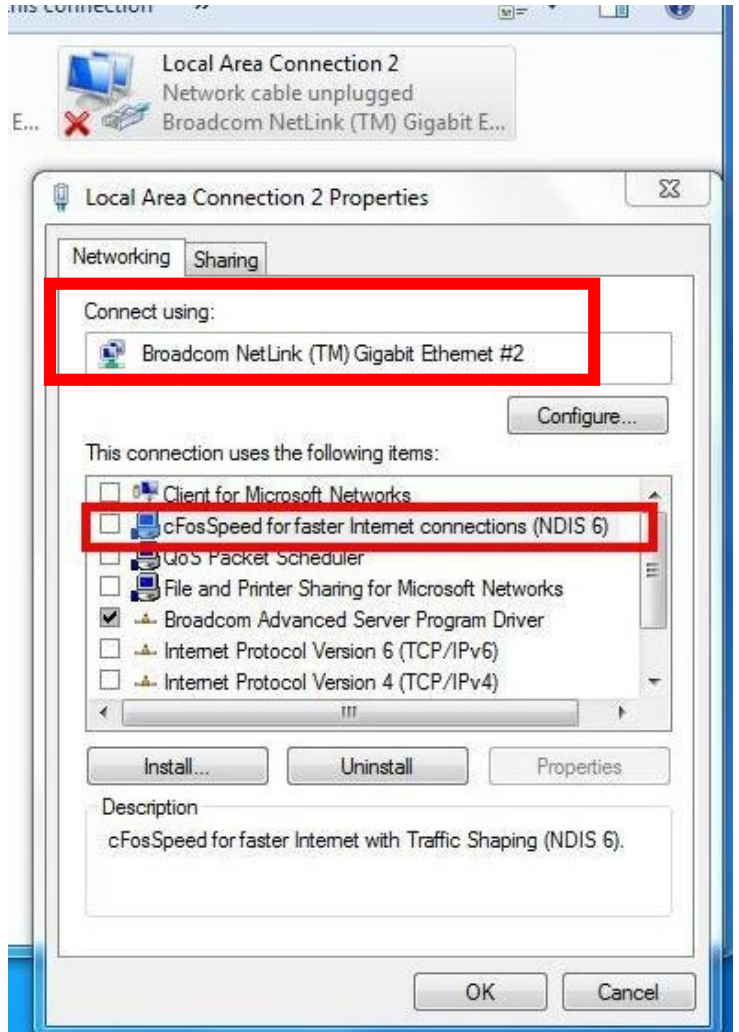
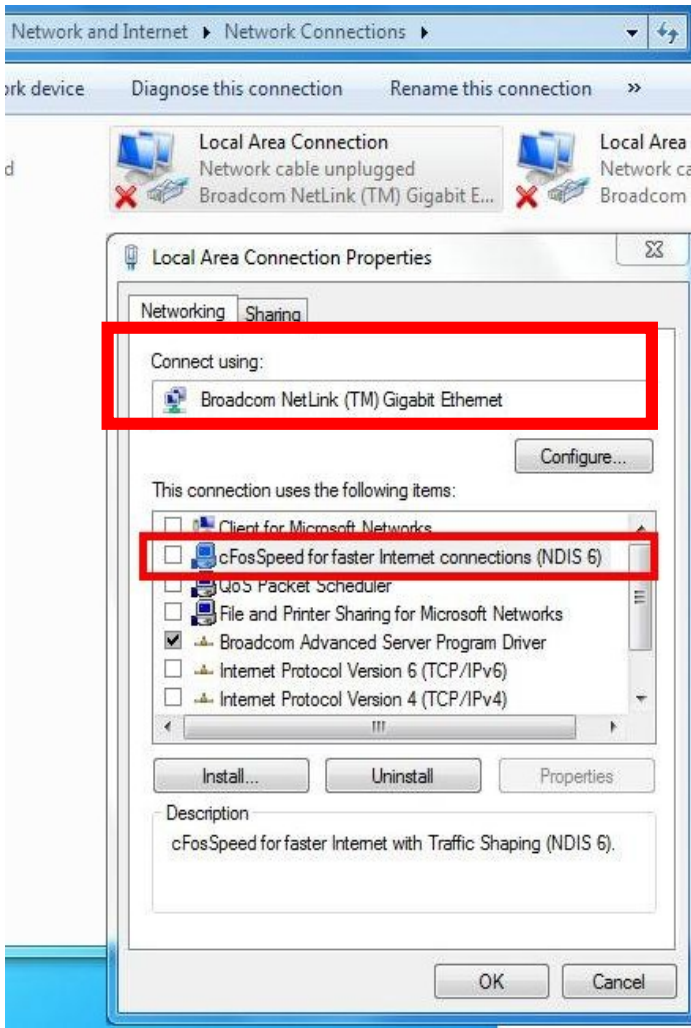
Step 5. In Traffic Shaping page, set all options to [No] except BASP Virtual Adapter



Step 6. Please refer to the SOP for setting Broadcom Teaming function.

Broadcom Teaming setup SOP: [Click here](#)

Step 7. Please enter Network Connections and cancel the selection of [cFos Speed for faster Internet connections (NDIS 6)] for Local Area Connection and Local Area Connection 2.



Step 8. Restart system once and connect both LAN cables back to system.