

H61iCafe

Intel® H61 Chipset

ASRock
www.asrock.com



Product Brief <<<

- 100% All Solid Capacitor design
- Supports Intel® K-Series unlocked CPU
- Supports Dual Channel DDR3 1333
- Supports Intel® HD Graphics 2000/3000
- Multi VGA Output options: D-Sub, DVI-D and HDMI
- 2 x USB 3.0, 2 x SATA3
- Supports XFast USB, AXTU, UEFI, Instant Boot, Instant Flash, APP Charger, SmartView
- Combo Cooler Option (C.C.O.)

The specification is subject to change without notice. The brand and product names are trademarks of their respective companies. Any configuration other than original product specification is not guaranteed.

Detail Specification <<<

Platform	- ATX Form Factor: 12.0-in x 8.6-in, 30.5 cm x 21.8 cm - All Solid Capacitor design
CPU	- Supports 2nd Generation Intel® Core™ i7 / i5 / i3 in LGA1155 Package - 4 + 1 Power Phase Design - Supports Intel® Turbo Boost 2.0 Technology - Supports Intel® K-Series unlocked CPU - Supports Hyper-Threading Technology
Chipset	- Intel® H61
Memory	- Dual Channel DDR3 memory technology - 4 x DDR3 DIMM slots - Supports DDR3 1333/1066 non-ECC, un-buffered memory - Max. capacity of system memory: 16GB
Expansion Slot	- 1 x PCI Express 2.0 x16 slot (blue @ x16 mode) - 2 x PCI Express 2.0 x1 slots - 2 x PCI slots
Graphics	- Supports Intel® HD Graphics 2000/3000 - Pixel Shader 4.1, DirectX 10.1 - Max. shared memory 1759MB - Multi VGA Output options: D-Sub, DVI-D and HDMI - Supports HDMI 1.4a Technology with max. resolution up to 1920x1200 @ 60Hz - Supports DVI with max. resolution up to 1920x1200 @ 60Hz - Supports D-Sub with max. resolution up to 2048x1536 @ 75Hz - Supports Auto Lip Sync, Deep Color (12bpc), xvYCC and HBR (High Bit Rate Audio) with HDMI (Compliant HDMI monitor is required) - Supports HDCP function with DVI and HDMI ports - Supports Full HD 1080p Blu-ray (BD) / HD-DVD playback with DVI and HDMI ports
Audio	- 7.1 CH HD Audio (Realtek ALC887 Audio Codec)
LAN	- PCIe x1 Gigabit LAN 10/100/1000 Mb/s - Atheros® AR8151 - Supports Wake-On-LAN
Rear Panel I/O	I/O Panel - 1 x PS/2 Keyboard Port - 1 x VGA/D-Sub Port - 1 x VGA/DVI-D Port - 1 x HDMI Port - 1 x Optical SPDIF Out Port - 4 x Ready-to-Use USB 2.0 Ports - 2 x Ready-to-Use USB 3.0 Ports - 1 x RJ-45 LAN Port with LED (ACT/LINK LED and SPEED LED) - HD Audio Jack: Rear Speaker / Central / Bass / Line in / Front Speaker / Microphone
SATA3	- 2 x SATA3 6.0 Gb/s connectors by ASMedia ASM1061, support NCQ, AHCI and "Hot Plug" functions
USB 3.0	- 2 x USB 3.0 ports by ASMedia ASM1042, support USB 1.0/2.0/3.0 up to 5Gb/s
Connector	- 4 x SATA2 3.0 Gb/s connectors, support NCQ, AHCI and Hot Plug functions - 2 x SATA3 6.0 Gb/s connectors - 1 x IR header - 1 x COM port header - 1 x HDMI SPDIF header - CPU/Chassis/Power FAN connector - 24 pin ATX power connector - 8 pin 12V power connector - Front panel audio connector - 2 x USB 2.0 headers (support 4 USB 2.0 ports)
BIOS Feature	- 32Mb AMI UEFI Legal BIOS with GUI support - Supports "Plug and Play" - ACPI 1.1 Compliance Wake Up Events - Supports jumperfree - SMBIOS 2.3.1 Support - IGPU, DRAM, PCH, CPU PLL, VTT, VCCSA Voltage Multi-adjustment
Support CD	- Drivers, Utilities, AntiVirus Software (Trial Version), ASRock Software Suite (CyberLink DVD Suite - OEM and Trial; Creative Sound Blaster X-Fi MB - Trial)
Unique Feature	- ASRock Extreme Tuning Utility (AXTU) - ASRock Instant Boot - ASRock Instant Flash - ASRock AIWI - ASRock APP Charger - ASRock SmartView - ASRock XFast USB - Hybrid Booster: - ASRock U-COP - Boot Failure Guard (B.F.G.) - Combo Cooler Option (C.C.O.) - Good Night LED
Hardware Monitor	- CPU Temperature Sensing - Chassis Temperature Sensing - CPU/Chassis/Power Fan Tachometer - CPU/Chassis Quiet Fan (Allow Chassis Fan Speed Auto-Adjust by CPU Temperature) - CPU/Chassis Fan Multi-Speed Control - Voltage Monitoring: +12V, +5V, +3.3V, CPU Vcore
OS	- Microsoft® Windows® 7 / 7 64-bit / Vista™ / Vista™ 64-bit / XP / XP 64-bit compliant
Certifications	- FCC, CE, WHOL - ErP/EuP Ready (ErP/EuP ready power supply is required)
Accessories	- Quick Installation Guide, Support CD, I/O Shield - 2 x SATA Data Cables (Optional)

ASRock XFast USB Technology - Faster Than Your Imagination!

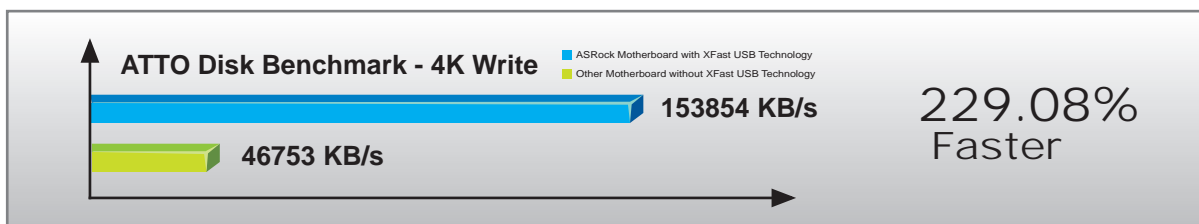
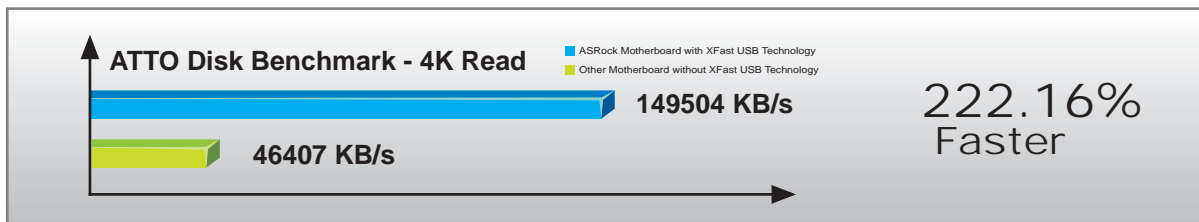


(The rear I/O photo is example only)

ASRock XFast USB Technology redefines the new standard in high performance computing. Proving once again to be the pioneer in motherboard industry, ASRock XFast USB Series Motherboards integrate with the latest XFast USB Technology which delivers the world's fastest USB data transfer speed. According to the below graph, it shows that the ASRock XFast USB technology can even boost USB 3.0 performance up to 229.08%!



USB 3.0 Benchmark



Intel® HD Graphics Built-in Visuals



Intel® Quick Sync Video

Intel® Quick Sync Video saves valuable time for PC users who want to create and edit video, synchronize it with other devices, and share it—at home and on the internet. Intel Quick Sync Video uses hardware on the processor, instead of software, to accelerate video encoding.



Intel® InTru™ 3D

Enjoy the ultimate 3D visual experiences—seamlessly—from your PC. Now you can watch your favorite 3D movies with Blu-ray Stereo 3D playback using active shutter 3D glasses. It delivers it all in 1080p full, high-definition resolution on your TV over HDMI 1.4.



Intel® Clear Video HD Technology

Intel® Clear Video HD Technology (Intel® CVT HD) enables rich media experiences with picture perfect images by using a host of advanced graphics technologies that support optimized, high-definition video playback and sharp image quality.



Intel® HD Graphics 2000/3000

Intel® HD Graphics is now built right into the processor! This integration means lower latencies and leads to superior mainstream gaming and enhanced 3D experiences.



Intel® Advanced Vector Extensions (AVX)

Intel® Advanced Vector Extensions (Intel® AVX) gives more computing power to application developers with a new, 256 bit instruction set extension to Intel® SSE.

H61iCafe

Intel® H61 Chipset

ASRock
www.asrock.com



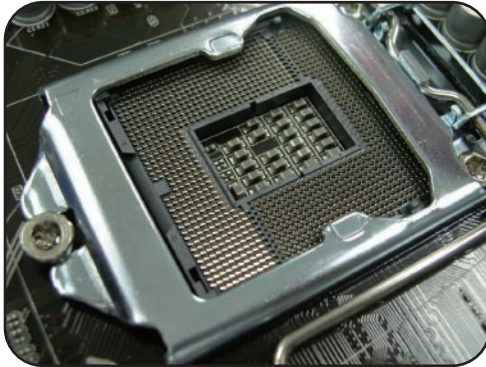
C.C.O.

Combo Cooler Option

C.C.O. provides the flexible option to adopt three different CPU cooler types, Socket LGA 775*, LGA 1155 and LGA 1156**

*C.C.O. may not be compatible with all Socket 775 CPU coolers.
**O is for Socket 1155 and Socket 1156 CPU cooler.

Support Intel®
K-Series unlocked CPU



100% All Solid
Capacitor design

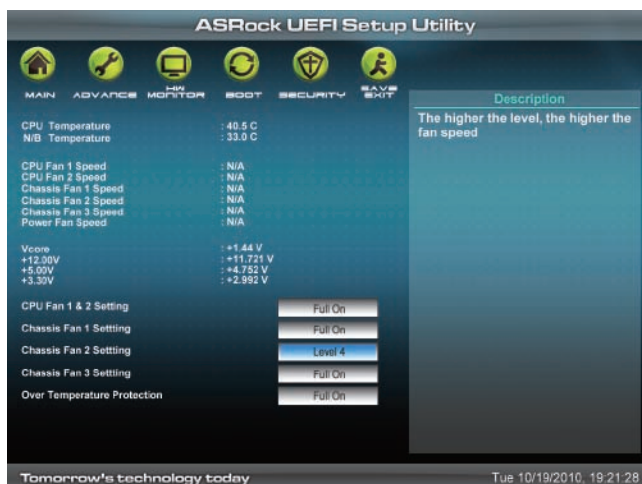


AXTU – The All-in-1 Tuning Software



ASRock Extreme Tuning Utility (AXTU) is an all-in-one software to fine-tune different features in an user-friendly interface, which includes Hardware Monitor, Fan Control, Overclocking, OC DNA and IES. In Hardware Monitor, it shows the major readings of your system. In Fan Control, it shows the fan speed and temperature for you to adjust. In Overclocking, you are allowed to overclock the GT frequency which helps to boost up the graphics performance and some voltage settings for optimal system performance. In OC DNA, you can save your OC settings as a profile and share with your friends. Your friends then can load the OC profile to their own system to get the same OC settings. In IES (Intelligent Energy Saver), the voltage regulator can reduce the number of output phases to improve efficiency when the CPU cores are idle without sacrificing computing performance.

UEFI – The Revolutionary BIOS Interface



*Windows Vista-64bit or Windows 7-64bit OS is required

Unified Extensible Firmware Interface (UEFI) is a revolutionary BIOS utility which offers tweak-friendly options in an advanced viewing interface. Compared with traditional BIOS design, the latest UEFI utility provides lots improved functions. The major features of UEFI include:

1. Graphical Visual Experience – UEFI provides an improved visual interface with colorful icons and makes your computing environment more versatile to replace the traditional dull BIOS page.
2. Mouse Enabling – Besides keyboard control, you can freely use mouse to select your ideal settings in UEFI as well.
3. Supports 3TB bootable HDD - UEFI breaks the limitations of 2TB bootable HDD on traditional BIOS. With UEFI, you can enjoy 3TB bootable HDD size.

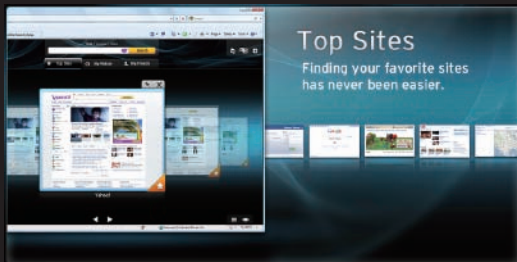
SmartView

Experience the Brand New Browser Now

SmartView is the smart start page for IE that combines your most visited web sites, your history, your Facebook friends and your real-time newsfeed into an enhanced view for a more personal Internet experience. ASRock motherboards are exclusively equipped with the SmartView utility that helps you keep in touch with friends on-the-go.

The Major Features of SmartView

Visual thumbnail images which categorize and rank your frequently visited websites, as well as provide a chronological view of your browser history.



A persistent, real-time Facebook newsfeed located within the Internet Explorer sidebar.



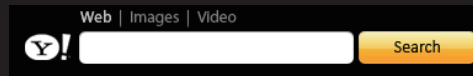
A "Friend Wall" that conveniently alphabetizes your Facebook friends by profile photo, allowing immediate access to your friends' profile pages.



A "share this" button which allows you to instantly and immediately share webpage posts and links to your friends' Facebook pages.



A persistent search box from best-in-class search engines such as Google, Yahoo, Baidu (China only) and Yandex (Russia only).



Two mode options that allow you to choose your favored view style.



Flow Mode



Flow Mode

System Requirements

OS version: Win7 32/64 bit, Vista 32/64

bit Browser version: IE8



CyberLink



CyberLink Power2Go 6.1 LE OEM

Power2Go 6 lets you burn and backup videos, photos, music and data onto Blu-ray Discs and DVDs.

CyberLink MediaShow 4.1 SE OEM

Photo and video management software MediaShow edits videos and photos instantly, creates slideshow, and allows publishing directly to YouTube and Flickr.

CyberLink PowerDVD 8.0 DTS Trial

World-renowned PowerDVD 8 DTS delivers outstanding DVD movie playback quality on your PC.

CyberLink PowerDirector 8.0 Trial

PowerDirector - Video Editing software – edits high-definition videos including AVCHD, allows output to PSP iPod and Blu-ray Disc.

CyberLink PowerBackup 2.5 Trial

PowerBackup backups valuable data on your PC.

Creative Sound Blaster X-Fi MB Trial

The Sound Blaster X-Fi MB solution provides premium audio quality, effects and features for PC systems equipped with onboard audio.

For gamers, the EAX® ADVANCED HD 4.0, with its state-of-the-art Multi-Environment rendering and reverb modelling, delivers a much more realistic and immersive 3D gaming experience than your motherboard audio ever will.