

# H61M-HVGS

Intel® H61 Chipset

**ASRock**  
www.asrock.com



## Product Brief <<<

- Solid Capacitor for CPU Power
- Supports Intel® K-Series CPU
- Supports Dual Channel DDR3 1333
- PCIE Gigabit LAN
- Supports Intel® HD Graphics with Built-in Visuals
- Dual VGA Output Options : D-Sub and HDMI
- Supports ASRock XFast USB Technology, Graphical UEFI BIOS
- Supports ASRock Extreme Tuning Utility (AXTU), Instant Boot, Instant Flash, Good Night LED, APP Charger, SmartView
- Combo Cooler Option (C.C.O.)

The specification is subject to change without notice. The brand and product names are trademarks of their respective companies. Any configuration other than original product specification is not guaranteed.

## Detail Specification <<<

<b>Platform</b>	- Micro ATX Form Factor: 8.9-in x 6.8-in, 22.6 cm x 17.3 cm - Solid Capacitor for CPU power
<b>CPU</b>	- Supports 2nd Generation Intel® Core™ i7 / i5 / i3 in LGA1155 Package - Supports Intel® Turbo Boost 2.0 Technology - Supports Intel® K-Series CPU - Supports Hyper-Threading Technology
<b>Chipset</b>	- Intel® H61
<b>Memory</b>	- Dual Channel DDR3 memory technology - 2 x DDR3 DIMM slots - Supports DDR3 1333/1066 non-ECC, un-buffered memory - Max. capacity of system memory: 16GB
<b>Expansion Slot</b>	- 1 x PCI Express 2.0 x16 slot (blue @ x16 mode) - 1 x PCI Express 2.0 x1 slot
<b>Graphics</b>	- Supports Intel® HD Graphics Built-in Visuals : Intel® Quick Sync Video, Intel® InTru™ 3D, Intel® Clear Video HD Technology, Intel® HD Graphics 2000/3000, Intel® Advanced Vector Extensions (AVX) - Pixel Shader 4.1, DirectX 10.1 - Max. shared memory 1759MB - Dual VGA Output: support HDMI and D-Sub ports by independent display controllers - Supports HDMI 1.4a Technology with max. resolution up to 1920x1200 @ 60Hz - Supports D-Sub with max. resolution up to 2048x1536 @ 75Hz - Supports Auto Lip Sync, Deep Color (12bpc), xvYCC and HBR (High Bit Rate Audio) with HDMI (Compliant HDMI monitor is required) - Supports HDCP function with HDMI port - Supports Full HD 1080p Blu-ray (BD) / HD-DVD playback with HDMI port
<b>Audio</b>	- 5.1 CH HD Audio (VIA® VT1705 Audio Codec)
<b>LAN</b>	- PCIE x1 Gigabit LAN 10/100/1000 Mb/s - Realtek RTL8111E - Supports Wake-On-LAN
<b>Rear Panel I/O</b>	I/O Panel - 1 x PS/2 Mouse Port - 1 x PS/2 Keyboard Port - 1 x VGA/D-Sub Port - 1 x HDMI Port - 6 x Ready-to-Use USB 2.0 Ports - 1 x RJ-45 LAN Port with LED (ACT/LINK LED and SPEED LED) - HD Audio Jack: Line in / Front Speaker / Microphone
<b>Connector</b>	- 4 x SATA2 3.0 Gb/s connectors, support NCQ, AHCI and Hot Plug functions - 1 x Print port header - 1 x COM port header - CPU/Chassis/Power FAN connector - 24 pin ATX power connector - 4 pin 12V power connector - Front panel audio connector - 2 x USB 2.0 headers (support 4 USB 2.0 ports)
<b>BIOS Feature</b>	- 32Mb AMI UEFI Legal BIOS with GUI support - Supports "Plug and Play" - ACPI 1.1 Compliance Wake Up Events - Supports jumperfree - SMBIOS 2.3.1 Support - IGPV, DRAM, PCH, CPU PLL, VTT, VCCSA Voltage Multi-adjustment
<b>Support CD</b>	- Drivers, Utilities, AntiVirus Software (Trial Version), ASRock Software Suite (CyberLink DVD Suite - OEM and Trial; Creative Sound Blaster X-Fi MB - Trial)
<b>Unique Feature</b>	- ASRock Extreme Tuning Utility (AXTU) - ASRock Instant Boot - ASRock Instant Flash - ASRock AIWI - ASRock APP Charger - ASRock SmartView - ASRock XFast USB - Hybrid Booster: - ASRock U-COP - Boot Failure Guard (B.F.G.) - Combo Cooler Option (C.C.O.) - Good Night LED
<b>Hardware Monitor</b>	- CPU Temperature Sensing - Chassis Temperature Sensing - CPU/Chassis/Power Fan Tachometer - CPU/Chassis Quiet Fan (Allow Chassis Fan Speed Auto-Adjust by CPU Temperature) - CPU/Chassis Fan Multi-Speed Control - Voltage Monitoring: +12V, +5V, +3.3V, CPU Vcore
<b>OS</b>	- Microsoft® Windows® 7 / 7 64-bit / Vista™ / Vista™ 64-bit / XP / XP 64-bit compliant
<b>Certifications</b>	- FCC, CE, WHQL - ErP/EuP Ready (ErP/EuP ready power supply is required)
<b>Accessories</b>	- Quick Installation Guide, Support CD, I/O Shield - 2 x SATA Data Cables (Optional)

# H61M-HVGS

Intel® H61 Chipset

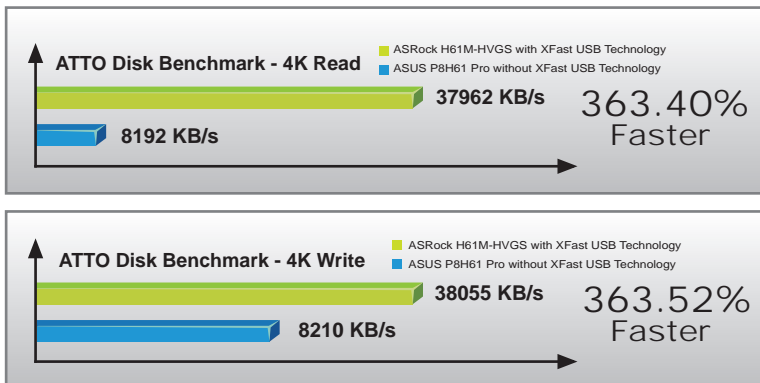
**ASRock**  
www.asrock.com

## XFast USB Technology

The world's fastest USB transfer speed.



## USB 2.0 Benchmark



## Intel® HD Graphics Built-in Visuals



Intel® Quick Sync Video



Intel® InTru™ 3D



Intel® Clear Video HD Technology



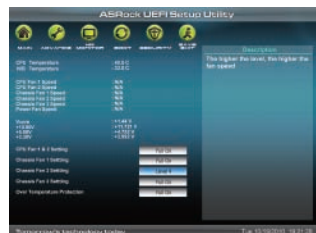
Intel® HD Graphics 2000/3000



Intel® Advanced Vector Extensions (AVX)

## Graphical UEFI

- \* Graphical Visual Experience
- \* Mouse Enabling
- \* Supports 3TB bootable HDD



## AXTU

ASRock Extreme Tuning Utility (AXTU) is an all-in-one software to fine-tune different features in a userfriendly interface, which includes Hardware Monitor, Fan Control, Overclocking, OC DNA and IES.



## App Charger

The best Apple charge companion

